

2803/205

CLOTHING CONSTRUCTION II

PRACTICAL

June/July 2019

Time: 6 hours



THE KENYA NATIONAL EXAMINATIONS COUNCIL

DIPLOMA IN FASHION DESIGN AND CLOTHING TECHNOLOGY
MODULE II

CLOTHING CONSTRUCTION II PRACTICAL

6 hours

INSTRUCTIONS TO CANDIDATES

1. You should have the following items for this examination:

- (i) plain medium weight fabric 1 metre long by 152 cm wide;
- (ii) fusible interfacing 57 cm by 42 cm;
- (iii) open end zip, 42 cm long;
- (iv) thread to match the fabric;
- (v) brown papers;
- (vi) one large envelope;
- (vii) sewing tools;
- (viii) elastic $\frac{1}{2}$ metre long by $1\frac{1}{2}$ wide.

2. At the end of the examination:

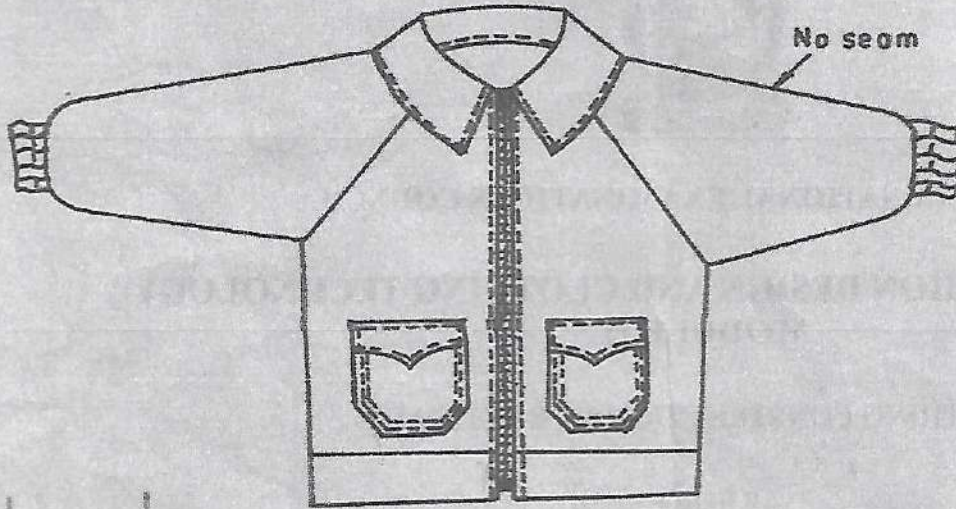
- a) Stitch on a label bearing your name and index number on a single layer of fabric without concealing any details.
- b) Enclose the garment in the envelope provided.

This paper consists of 2 printed pages.

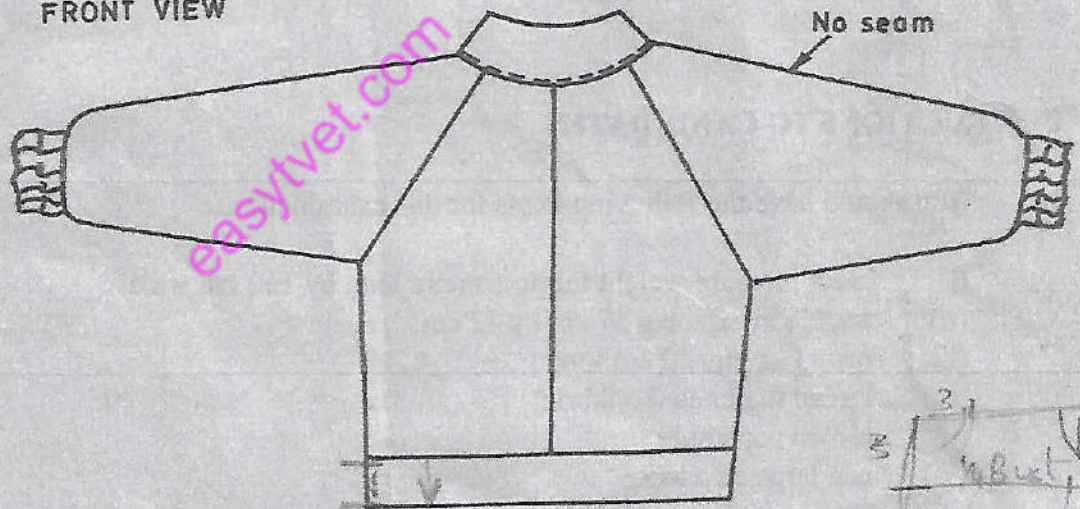
TASKS

Using the measurements and the materials provided, cut out and make the garment style sketched below as follows:

- a) use the double stitched seam at the underarms and the sides.



FRONT VIEW



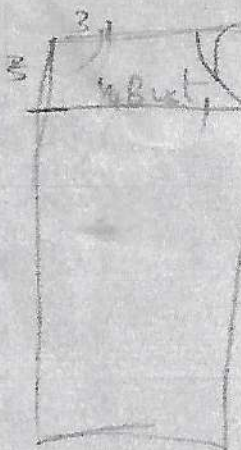
BACK VIEW

MEASUREMENTS

Chest - 76 cm ^{30"}
 Waist - 68 cm ^{27"}
 Seat - 79 cm ^{31"}
 Across back - 31.6 cm ^{12.5"}
 Neck size - 33 cm ^{13"}
 Collar

Shoulder - 11.5 cm ^{4.5"}
 Back neck to waist - 35 cm ^{13.75"}
 Scye depth - 18.8 cm ^{7.5"}
 Full length - 50 cm ^{19.5"}
 Sleeve length - 47 cm ^{18.5"}
 Waistband depth - 5 cm ^{2"}

1C, K2 - 32X
 23.2 cm



THIS IS THE LAST PRINTED PAGE.

2010 7.5
 1/2 x 3/4
 20

1/4

1/2 x 1 1/2
 1/2 x 1 1/2

1/4
 205
 1/2 x 45